



## RELIEF VALVES

# RELIEF VALVES

### PREMIER INDUSTRIES

1590 99th Ln NE,  
Minneapolis, MN 55449  
763-786-4020



**MADE IN THE USA**

*Minneapolis, MN*

### DESCRIPTION

Premier relief valves protect your system from overpressurization with reliable preset relief pressures between 500-1800 psig (34.47-124.11 bar). Great for stand alone use or for use with a wide range of Premier regulators for optimum reliability. Premier relief valves are available in a variety of materials; they can be used with a wide range of media as compatible with their materials of construction.

### FEATURES

- Captured outlet
- PCTFE seat
- Compatible with gas and hydraulic media
- Available in a variety of materials

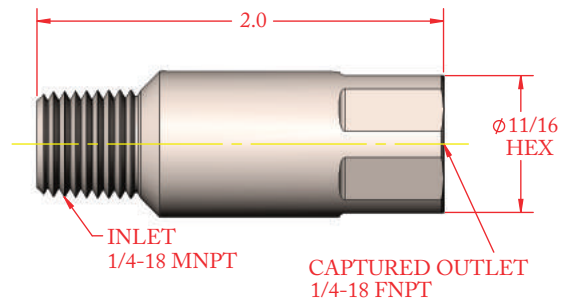
# RELIEF VALVES

## RELIEF VALVES



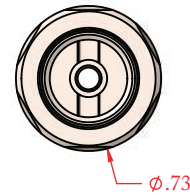
### SPECIFICATIONS

- **RELIEF PRESSURE :**
  - MAX: 1800 PSIG (124.11 bar)
  - MIN: 500 PSIG (34.47 bar)
- **OPERATING TEMPERATURE :**
  - -100 - 165°F (-73 - 73°C)



### MATERIALS OF CONSTRUCTION

- **HOUSING MATERIALS:**
  - SAE 360 Brass / Nickel Plated
  - 6061-T6 Aluminum / Nickel Plated
  - 303 Stainless Steel
  - 316 Stainless Steel
- **SEAT:** PCTFE
- **SPRING:** 300 Series Stainless Steel
- **ADJUSTING SCREW:** 303 Stainless Steel
- **SEAT RETAINER:** 303 Stainless Steel



(Part Number 70-00288 shown above)

### PORTING

- **INLET:** 1/4" MNPT
- **OUTLET:** 1/4" FNPT (*captured*)



## RELIEF VALVES



<b>SERIES</b>	-	<b>1</b>	-	<b>XXX</b>
<b>70-00288</b>	-		-	

<b>1</b>	<b>HOUSING MATERIAL AND FINISH</b>
<b>1</b>	SAE 360 Brass, <i>Nickel Plated</i>
<b>2</b>	6061-T6 Aluminum, <i>Nickel Plated</i>
<b>3</b>	303 Stainless Steel, <i>Cleaned per procedure #515</i>
<b>4</b>	316 Stainless Steel, <i>Cleaned per procedure #515</i>
<b>XXX</b>	<b>FACTORY SET RELIEF PRESSURE IN PSIG / 10</b>
<p>'XXX' Relief pressure in psig divided by 10.  <i>Example: '055' = 550 psig relief pressure.</i>  <i>'120' = 1200 psig relief pressure.</i></p> <p>Use all 3 digits.</p>	